



INTERNATIONAL
MISSION BOARD



ANNUAL STATISTICAL REPORT

Reporting on 2024 Data

The Great Commission

And Jesus came and said to them, "All authority in heaven and on earth has been given to me. Go therefore and make disciples of all nations, baptizing them in the name of the Father and of the Son and of the Holy Spirit, teaching them to observe all that I have commanded you. And behold, I am with you always, to the end of the age."

Matthew 28:18-20



The Great Commission can feel unachievable, but Scripture promises a future where every nation, tribe, people and language will know and worship the Lord. The vision of the Great Multitude is the motivation for every believer in this work. And so we go, faithfully, on a Great Pursuit of the lost.

We go despite unfathomable challenges. As our global population soars, research shows that 166,338 people die each day separated from God. We know of 3,118 people groups with minimal access to the gospel and no church-planting presence. No one is currently engaging them with the Light of the world.

Pushing through obstacles, we do not lose hope. The Lord continues to bless the work of your International Mission Board missionaries, as you'll see through these reports reflecting missionaries' efforts in 2024. Praise the Lord for the changed lives represented by these statistics!

As IMB missionaries remain committed to a biblical core missionary task, we're especially pleased to give you reports this year of the final stage of that task: Exit to partnership. We are immensely blessed when local believers are trained and motivated to carry gospel work forward. I trust you'll be inspired to read those reports on pages 14-17.

Thank you, on behalf of your IMB missionaries and our national partners, as we press forward in this work together.



Paul Chitwood
IMB President



"After this I looked, and behold, a great multitude that no one could number, from every nation, from all tribes and peoples and languages, standing before the throne and before the Lamb."

REVELATION 7:9

Table of Contents

The Missionary Task

At IMB we believe the core missionary task has six components:
entry, evangelism, discipleship, healthy church formation,
leadership development, and exit to partnership.



Learn more about the Missionary Task in IMB's *Foundations* at <https://imb.org/foundations>

Global Realities

Global Population

8,094,268,920

Global Daily
Population Growth

209,550

Total People Groups

12,263

Unreached
People Groups

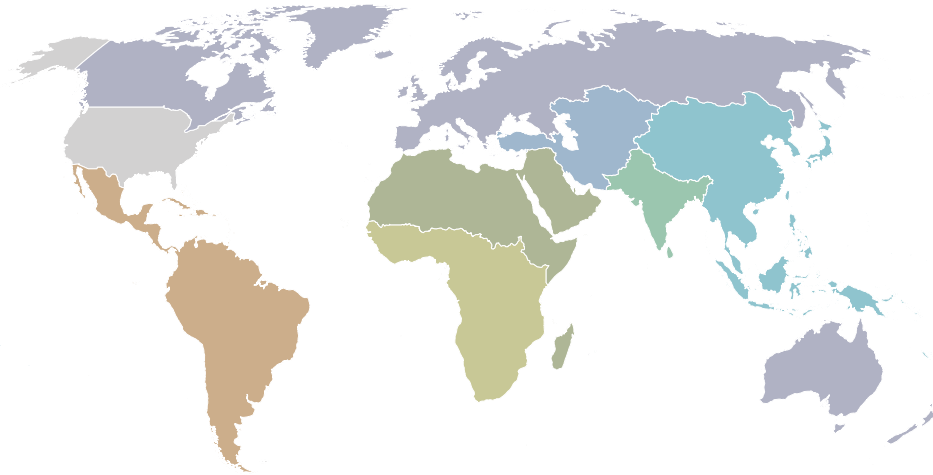
7,324

Unengaged Unreached
People Groups

3,118

Global Dying Daily
Apart from Christ

166,338



Global Affinities

- | | |
|-----------------------|---|
| European Peoples | Northern African and Middle Eastern Peoples |
| Central Asian Peoples | Asian Pacific Rim Peoples |
| American Peoples | Sub-Saharan African Peoples |
| South Asian Peoples | Global Deaf Peoples |



At a dump outside of Lusaka, Zambia, children search for food or things to sell. In Sub-Saharan Africa, 40% of the population is under 15. The top 20 countries with the highest poverty rates are in Sub-Saharan Africa. As a result almost 23% of the Sub-Saharan African population are under-nourished according to the World Hunger Index 2022.

IMB Global Impact

LEFT> Young people gather for music and the preaching of the founding pastor of Gleam Living Church, a church plant reaching out to urban youth in Switzerland.

CENTER> Two children stand outside their family's tent, known as a 'ger,' in Mongolia. Educating children of rural families can be difficult. Only 45% of rural students complete high school, compared with 55% nationally.

RIGHT> A physical therapist from a Baptist church in Mississippi checks an elderly Zapotec man's blood pressure at a clinic in the mountain town of Benito Juarez in Oaxaca, Mexico.



1,915
unique people groups
impacted in 2024

76.73%
of people groups impacted
were unreached (UPGs)

109
people groups moved from
unengaged to engaged in 2024

11,803
short-term volunteers went
on mission trips with IMB

LEFT> People walk the streets of Villa Cildañez, a poor area on the outskirts of Buenos Aires.

CENTER> Rampant violence, inflation, gang warfare, soaring crime rates, and shortages of food, medicine, and essential services have forced millions to flee Venezuela. Around 2,000 people leave daily for other Latin American and Caribbean countries.

RIGHT> At the Paris Olympics, IMB missionaries and French church volunteers engaged Olympic visitors with the gospel. In 5 weeks, over 9,000 New Testaments or Scripture portions and over 6,000 gospel conversations were shared.



Entry

Entry is the component of the missionary task that considers how to access people who need to hear the gospel and formulates plans of entry that help facilitate the spread of the gospel and the expansion of His church.

1,435,001

Children, youth, and students impacted

282,747

Refugees impacted

629,108

Rural people impacted

941,663

Elderly people impacted

469,740

Urban people impacted

19,217

Hours spent prayer walking

932,259

Views of digital gospel content (watched to at least 95% completion)

46,784

Hours of language learning



Nearly 60% of the global population live in urban areas. By 2050, the United Nations expects 68% of the world to be urban. In 2050, there will be around 7 billion urban dwellers and 3 billion rural dwellers worldwide, with unprecedented numbers of lost people in need of the gospel.



Entry

Human Needs projects help our personnel and partners respond to life-altering moments with the life-giving gospel of Jesus Christ in both words and deeds. These projects strengthen communities, protect children and families, care for refugees, and respond to crises through community development, education, medical care, trauma healing, and disaster relief.

2024 Human Needs Projects

Affinity	# of Projects	# of Individuals Impacted
Total	3,013	271,603
American Peoples	192	78,372
Asian Pacific Rim Peoples	355	22,623
Central Asian Peoples	400	20,508
Deaf Peoples	22	80
European Peoples	149	17,166
Northern African and Middle Eastern Peoples	922	92,624
South Asian Peoples	576	28,094
Sub-Saharan African Peoples	385	11,916



Eric Reese, IMB missionary to Brazil, works alongside Igreja Batista na Sé, a Brazilian Baptist church in downtown São Paulo, Brazil. The ministry works among the homeless and substance-addicted people of the Praça da Sé area of downtown São Paulo, Brazil.



Deaf West Africans use workshops at StoryOne camps to learn how to present Bible stories visually. They use pictures and mnemonic sign language to commit the stories to heart.

Evangelism

The foundation of disciple making is evangelism that is clear in its proclamation of the full content of the gospel message.

Global Stats

1,609,869

Total people who heard a partial or full gospel presentation

795,482

Total people who heard a full gospel presentation and had an opportunity to respond

144,969

Total people who decided to follow Jesus Christ

68,628

Total people who were baptized

Evangelism

Affinity	Heard	Opportunity	Decided to follow	Baptized
Total	1,609,869	795,482	144,969	68,628
American Peoples	60,715	22,218	2,450	311
Asian Pacific Rim Peoples	150,146	61,801	14,605	10,963
Central Asian Peoples	28,542	8,656	685	344
Deaf Peoples	1,991	366	29	8
European Peoples	50,470	18,089	783	217
Northern African and Middle Eastern Peoples	51,623	30,818	3,853	2,524
South Asian Peoples	1,178,938	596,205	111,983	53,482
Sub-Saharan African Peoples	84,933	56,033	10,513	778



An IMB missionary, left, talks with a community leader in a small town in Ecuador, where the missionary and his wife hope to help facilitate a church plant. The community leader is not a Christian but has agreed to participate in a Bible study.

The reported statistics may occasionally represent the same individual multiple times if that individual heard a portion of the gospel in different evangelism activities.

Discipleship

The central command of the Great Commission is to make disciples. Because a disciple is more than a person who has mastered a set of information or practices a set of spiritual disciplines, discipleship involves the intentional transformation of the heart, mind, affections, will, relationships, and purpose.

46,277

Given basic
discipleship

126,333

Trained in
evangelism

77,648

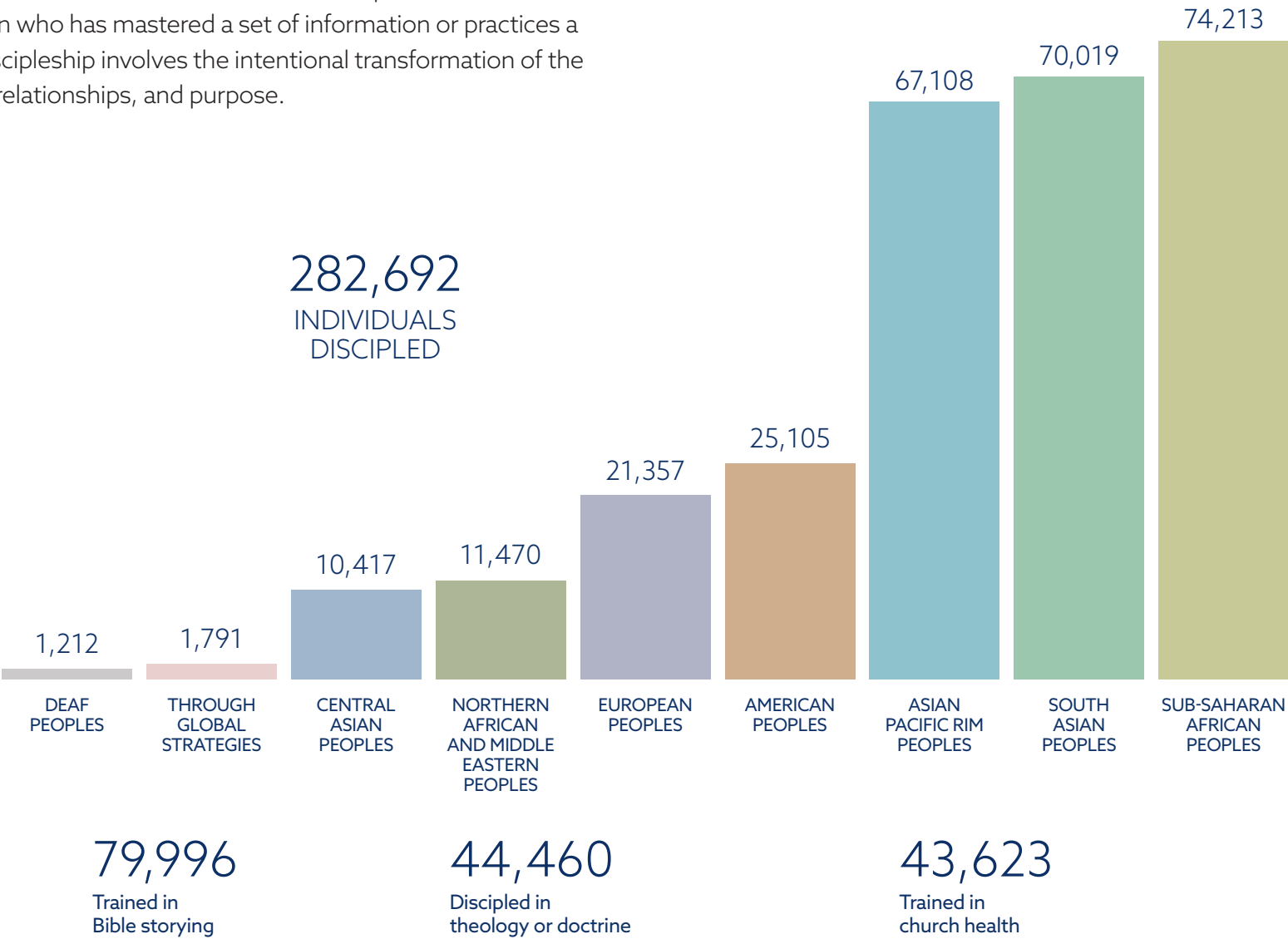
Trained to
make disciples

37,820

Trained in
church planting

282,692

INDIVIDUALS
DISCIPLED



The reported statistics may occasionally represent the same individual multiple times if that individual participated in different discipleship activities.

Church Formation

A church is a group of baptized believers in Jesus Christ who are committed to be the body of Christ to one another and who meet regularly to carry out the functions of a biblical church. IMB is committed to planting healthy churches that multiply. IMB missionaries work to make disciples and train indigenous pastors/elders/overseers to lead churches that are formed.

7,025

Total new groups

2,409

Total new churches



An IMB missionary leads a Bible study for Ukrainian refugees in a Polish Baptist Church. The church has been actively involved in meeting the needs of refugees. The missionary shares 2 Corinthians 4:9-10 and talks about how God does not leave His people in times of persecution.

Leadership Development

Biblical leadership is essential to the well-being of every local church. A key metric that measures the potential for entrusting ongoing Kingdom work to local partners is leadership development and multiplication. The development of local leaders and their ability to develop other leaders is paramount to sustainable Kingdom work and gospel presence.

20,655

Trained in preaching or teaching

14,195

Trained as a pastor or elder

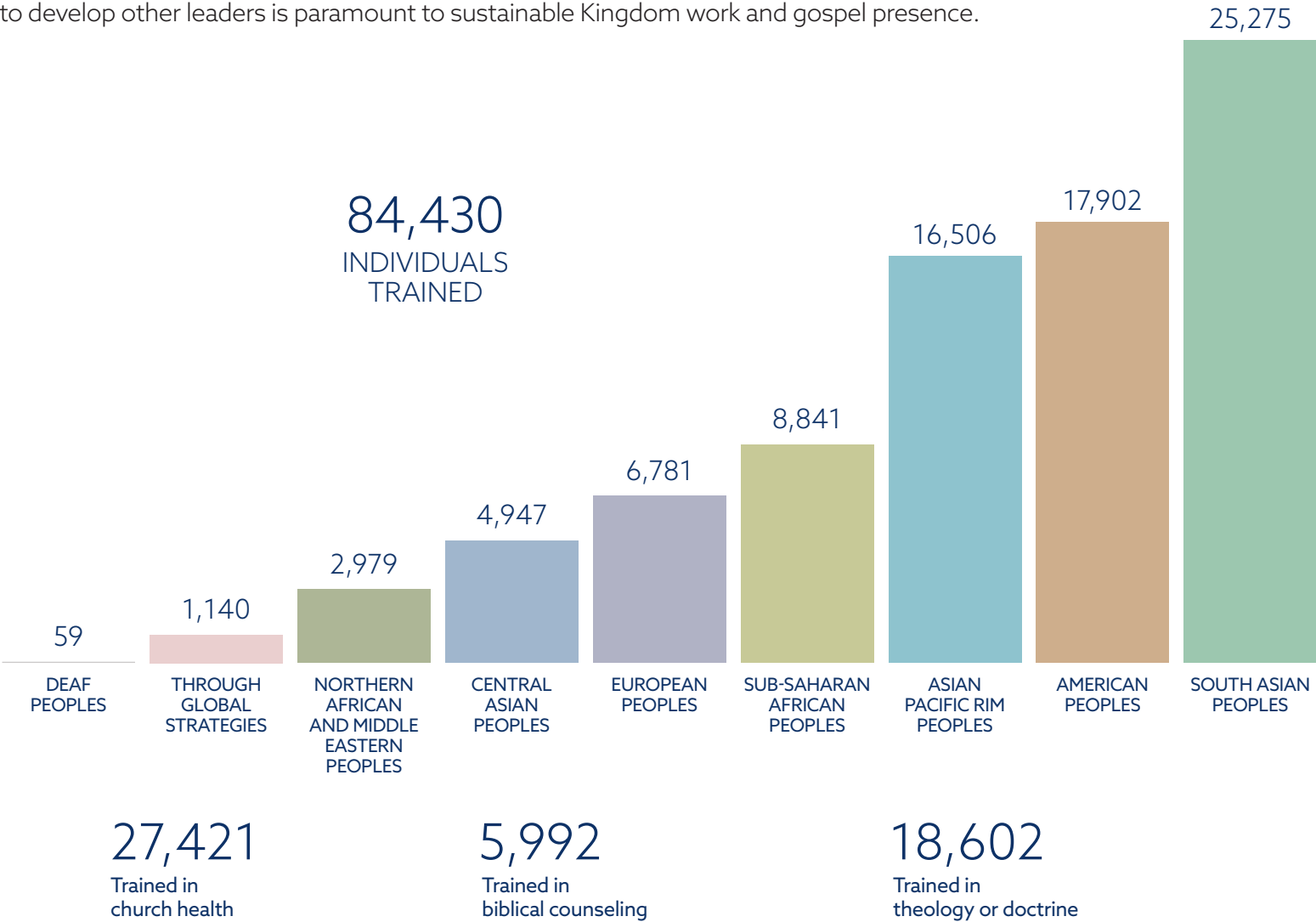
25,702

Trained in church planting

33,567

Trained in evangelism

84,430
INDIVIDUALS
TRAINED

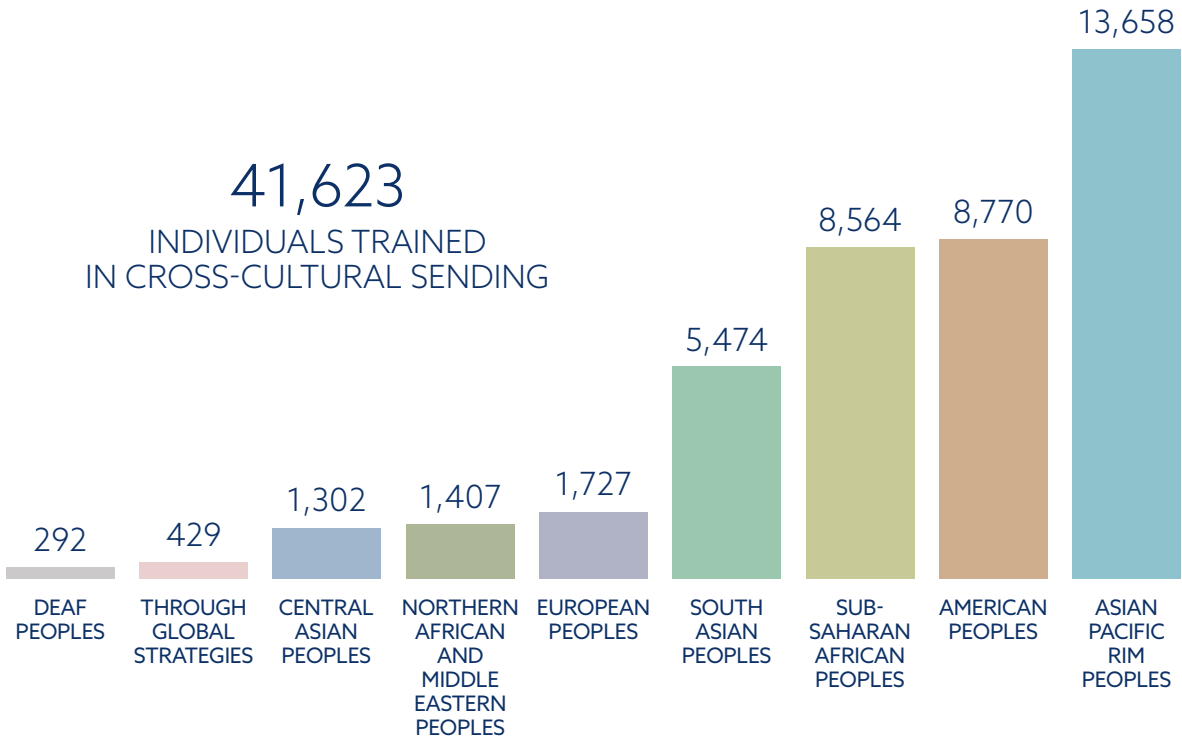


The reported statistics may occasionally represent the same individual multiple times if that individual participated in different leadership development activities.

Exit to Partnership

IMB’s goal is to complete the missionary task among each people group or place and then to exit to partnership. Exit to partnership can occur when the local churches from that people or place are actively participating in all six components of the core missionary task and embracing their own stewardship and responsibility for fulfilling the Great Commission.

Our partners around the world work closely with IMB to expand their role in the Great Commission. Together, we help churches send cross-cultural missionaries through Eight Steps* consultations, which build a solid bridge from the church to the mission field. These Global Missionary Partners (GMPs) serve on IMB teams, benefitting from 179 years of missions experience.



Total sent and received from 2020 until December 31, 2024

*Learn more in IMB’s *Eight Steps of the Missions Continuum* at <https://store.imb.org/eight-steps-of-the-missions-continuum/>

Global Missionary Partners [GMPs]

Affinity	Sent	Received
Total	210	210
American Peoples	67	19
Asian Pacific Rim Peoples	106	44
Central Asian Peoples	13	25
European Peoples	14	14
Northern African and Middle Eastern Peoples	1	47
South Asian Peoples	3	37
Sub-Saharan African Peoples	6	24

2024 Annual Highlight: Exit to Partnership

Latin American missionaries can access some countries where U.S. passports are not welcomed. There are currently 368,341 evangelical churches in Central and South America, and 46,793,666 believers who can be mobilized to engage Unengaged Unreached People Groups (UUPGs) on other continents. The Global Missions Board of the Brazilian Baptist Convention (JMM) has deployed 16 GMPs to IMB teams. To build the pipeline of long-term Brazilian missionaries,

IMB and JMM together are forming a missionary training center in Europe where Brazilian missionaries will train and then intern on IMB teams. Our prayer is that God will call these interns to reach UUPGs in parts of Europe where IMB does not have full-time missionaries. Partnering Latin American Baptist conventions and networks have sent 66 GMPs to serve on IMB teams.



On their first anniversary, the Paragominas Baptist Church in Brazil baptizes 13 new members into the congregation of 60. Pastor Francelino Mendonça reported the church already had two congregations.

2024 Annual Highlight: Exit to Partnership

South Korean Baptists are developing their missionary pipeline by sending their own high school and college-age students (like IMB's Hands On and Journeyman programs) to be trained and mentored by IMB team leaders. Language is not a barrier for South Korean missionaries serving on IMB teams, as the IMB has many Korean American missionaries in almost every affinity to

receive them. Instead of having to learn English to serve on an IMB team, South Korean missionaries can focus on learning the heart language of the people whom they are trying to reach. The Korean Baptist Foreign Mission Board has sent 33 GMPs to serve on IMB teams.



IMB president Paul Chitwood (left) welcomes Jaechul Yoon (right), president of the Korean Baptist Conference and pastor of Daegu Central Baptist Church in Seoul, South Korea, and Sung Ryong Jung (center), pastor at Ever Love Church, during a break at a conference for Southern Baptist and Korean Baptist leaders.

2024 Annual Highlight: Exit to Partnership

The One Sending Body of Filipino Southern Baptist Churches (OSB) has a vision to impact lostness in the Philippines and in surrounding nations. The OSB is made up of six Filipino Baptist conventions, the Filipino Women's Missionary Union (WMU), and Baptist seminaries. Historically, each participating organization recruited and sent missionaries independently. Within OSB, these groups are sharing resources to train and fund missionaries, while

streamlining their Great Commission efforts. In 2019, IMB leaders attended OSB's Fourth National Missions Congress where both organizations signed a Memorandum of Understanding pledging to work together to make disciples of all nations. Through this partnership, IMB teams are receiving GMPs sent by OSB. Together, IMB and OSB are working among people groups and in places that are difficult for U.S. citizens to access.



OSB has a vision to reach the tribal UUPGs living in remote places in the islands. In 2024, IMB received 10 GMPs from reached tribes in their Tribals-to-Tribals program, so Filipino tribal peoples might reach other tribal peoples with the gospel. In all, the OSB has sent 16 Filipino Baptist missionaries as GMPs serving on IMB teams.

2024 Annual Highlight: Exit to Partnership

In February 2024, Baptist representatives from thirteen different African nations gathered with their IMB missionary colleagues in Roodepoort, South Africa, to celebrate the launch of a new cooperative sending organization, Africans on Mission (AoM). The Chairman of AoM excitedly pleaded for prayer for this new endeavor, and added, "Africa has always been on the receiving side of

missionaries, and now is the time for us to move to the other side. We want to be a continent that is sending missionaries to the rest of the world." IMB teams have received 7 GMPs from South Africa and Kenya, and there are more African missionaries in the pipeline preparing to be sent.



Jesus Tchavango, an Angolan Baptist, leads worship at the 2024 Global Senders Forum in Asia. Tchavango told the crowd, "When Africans worship, we move!" He was recognized for traveling close to 100 hours to arrive in Asia from his home in Angola. His trip began with a 40-hour bus ride before he boarded his first flight.

Reading this Report

When reading IMB's annual statistical report, please be aware that statistics vary from year to year. For security reasons, the total number of personnel and close partners in each part of the world is not publicly released. Neither is the time spent laboring among a particular people group or place released. Your IMB personnel and partners, regardless of the difficulty of the soil, are laboring diligently, trusting God with the results, and working to provide transparent, accurate, and trustworthy reporting.

Why do field statistics vary? Some field teams have many close partners, while others have few to no believers and partners. In some places providing the opportunity to hear the gospel is the work of one or two, and in others it is the work of hundreds or thousands. Some teams labor faithfully for a decade to see a single person come to saving faith, while others see many following Christ in their first year. Teams may stay in place for years discipling pastors and leaders, while other teams are forced to leave after a short time by hostile governments, persecution, or health issues. Some teams see fruit in terms of local churches' ownership in the Great Commission and well-discipled pastors and leaders; they then transition to a peer relationship with local leaders, stop reporting those partners' efforts, and shift their team's focus to new unreached people groups resistant to the gospel. Because of this, one year a team may show a multitude of gospel shares and new churches and the next year report minimal gospel sharing and no new churches.

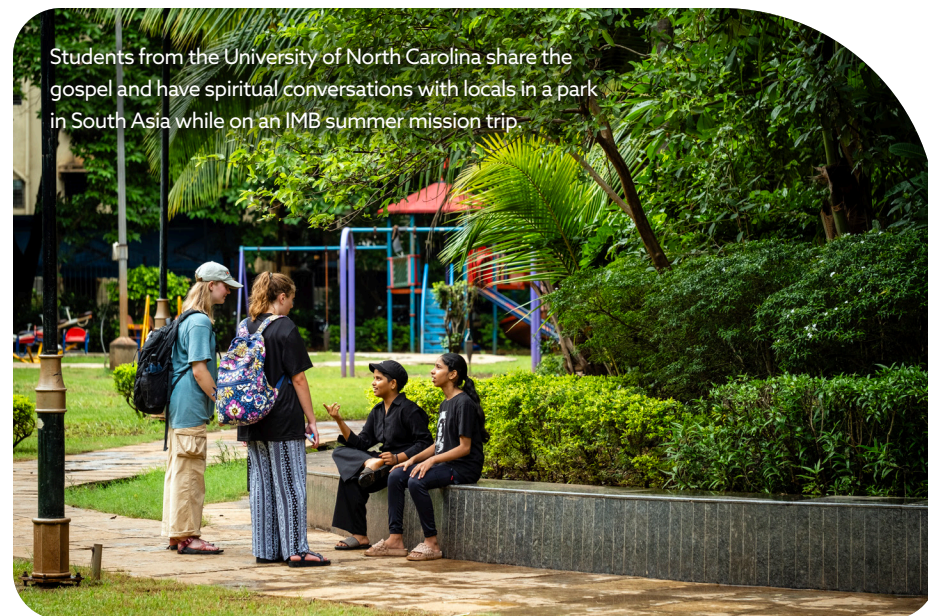
Year-by-year comparisons of "faithfulness" and resulting "fruitfulness," even within the same affinity, should be avoided. The circumstances behind changes are varied and complex. Field and personnel realities point to the desperate need for prayer.

How is the data collected?

All year IMB missionaries and their close baptistic partners enter activities and any resulting fruit from the Lord into software that tracks and maintains this data. The software identifies progress in each of the six components of the missionary task among the people groups and places of the world. Our personnel carefully report and prayerfully represent IMB's commitment, like the Apostle Paul, not to report on work done outside of the sphere apportioned to us by the Lord (2 Corinthians 10:12-18). Statistics may change from year to year due to changes in reporting relationships with partners.

Photos and names

Photos in this report are not related to the work described. Names have been changed for security.



Students from the University of North Carolina share the gospel and have spiritual conversations with locals in a park in South Asia while on an IMB summer mission trip.

Definitions

Terms used in this report

Affinities are strategic combinations of all the world's people groups, which help facilitate the spread of the gospel based on shared culture, root languages, ethnicities, and other similar factors. IMB has found that having teams focus on these affinity groupings allows for more focused effort on similar peoples regardless of where they live.

"Faithfulness" data is collected about the missionary activities that are the responsibility of our personnel and their partners—sharing the gospel, discipling believers, training pastors and leaders, and identifying and engaging people groups.

"Fruitfulness" data shows what God is doing through "faithfulness" activities. "Fruitfulness" data includes such things as individuals receiving salvation through Jesus Christ and new churches forming. IMB collects this data so we can glorify God by boasting in what the Lord is doing through our personnel and partners.

An **Explorer** is a young man or woman sent out to find, share the gospel with, and bring back actionable data about the remaining 3,072 unengaged unreached people groups, so any truly unengaged unreached people groups may be fully engaged with church-planting strategies by 2033.

A **Global Missionary Partner (GMP)** is a national partner follower of Jesus, who is called by God to be a cross-cultural missionary, assessed and sent by their local church and sending entity, affirmed by IMB field personnel, and working in cooperation with an IMB field team.

Unreached Peoples are defined as people groups with less than 2% evangelical populations. The list is designed to highlight priority people groups needing missionary effort.

Unengaged Peoples are defined as people groups with neither missionaries from outside, nor local Christians within, who are implementing a church-planting strategy consistent with evangelical faith and practice.

Engaged Peoples are defined as people groups with cross-, near-, or same-culture Christians implementing an active church-planting strategy among them consistent with evangelical faith and practice.

Impacted Peoples are defined as individuals and people groups who had any of the six missionary task activities performed among them by IMB field personnel and partners. Impacted does not necessarily mean engaged with a church-planting strategy.

New Churches are groups of baptized believers in Jesus Christ who are committed to be the body of Christ to one another and who meet regularly to carry out the functions of a biblical church. IMB is committed to planting healthy churches that multiply. IMB missionaries work to make disciples and train indigenous pastors/elders/overseers to lead any churches that are formed. IMB plants churches that align with the *Baptist Faith & Message 2000*. This statistic refers only to groups that became churches during the reporting year.

New Groups are gatherings of people who intend to become a church according to the *Baptist Faith & Message 2000* definition. These groups consist of believers and non-believers meeting in the early formation stage of a church. This statistic refers only to groups started within the reporting year.

REACHING THE NATIONS, TOGETHER.



INTERNATIONAL
MISSION BOARD

imb.org

3806 MONUMENT AVE
RICHMOND, VA 23230
800.999.3113
INFO@IMB.ORG



Esta guía está disponible en español.
이 가이드는 한국어로 되어 있습니다.
備有中文版手冊

